

IMPORTANT: WIRELESS LUMINAIRE AND DEVICE BARCODES

Requirements:

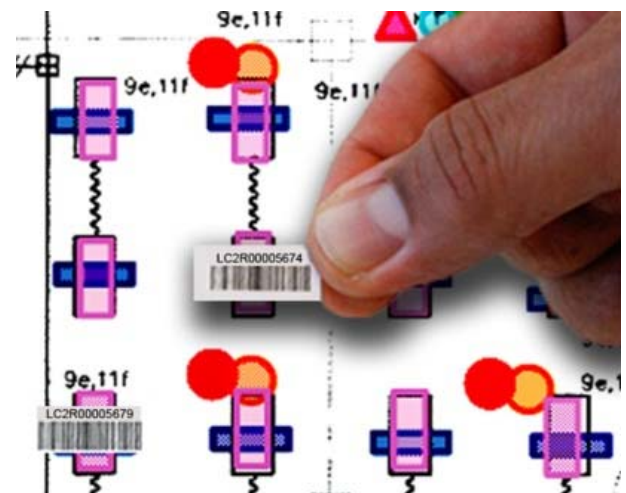
Installer must place the small barcode labels included with all XPoint Wireless luminaires and devices on a printed plan(s) prior to Onsite System Startup.

- **Without the printed plan(s) of barcodes, System Startup will require re-quotation with additional cost to locate device IDs.**
- The barcodes indicate the unique ID of each XPoint Wireless device. This ID is used during System Startup to program devices with the correct groupings and settings.

Barcode Instructions:

1. **Print a plan of the installation area to a minimum D size (24" x 36").**
The plan may be a reflected ceiling plan, lighting plan, or electrical plan, so long as all devices can be located by the Field Support Engineer.
2. **Place the small barcode label (the peel-off label that is 0.88" long) from each wireless luminaire and device on the floorplan.**
The large barcode label (1.25" long) can be used on the outside of any housing or junction box that encloses an XPoint Wireless device.
3. **Save the plan at the job site, and hand over to Acuity Field Support Engineer or other personnel responsible for Onsite System Startup.**
 - a. It is also acceptable to provide the barcode plan via high-resolution digital file. Scan plan(s) with labels to PDF and email to controls.startups@acuitybrands.com, with Project Name and Project Address in subject line and a copy of the Onsite Startup Request form.

Example:



Additional Notes:

1. If the small barcode label is missing or damaged, write down the last 8 digits of the barcode ID (from the large barcode or device enclosure) on the plan.
2. Draw on plan any location changes for fixtures or devices, if different than shown on plan.
3. Highlight or circle on the plan any luminaire fed by emergency or egress circuit.

Contact Tech Support at (800) 345-4448 for any questions.

Oracle Part Number RJ521363

Revision 20150727